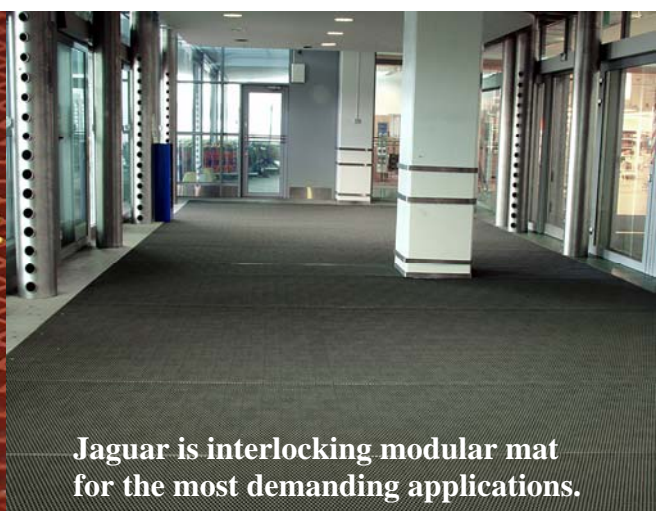
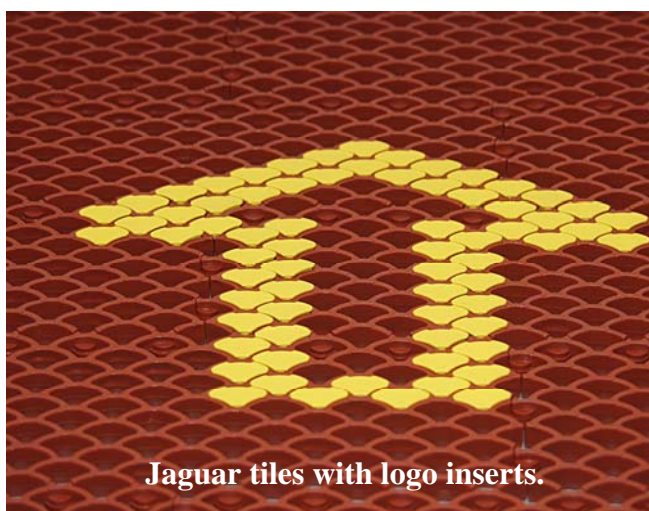


Jaguar - entrance mat

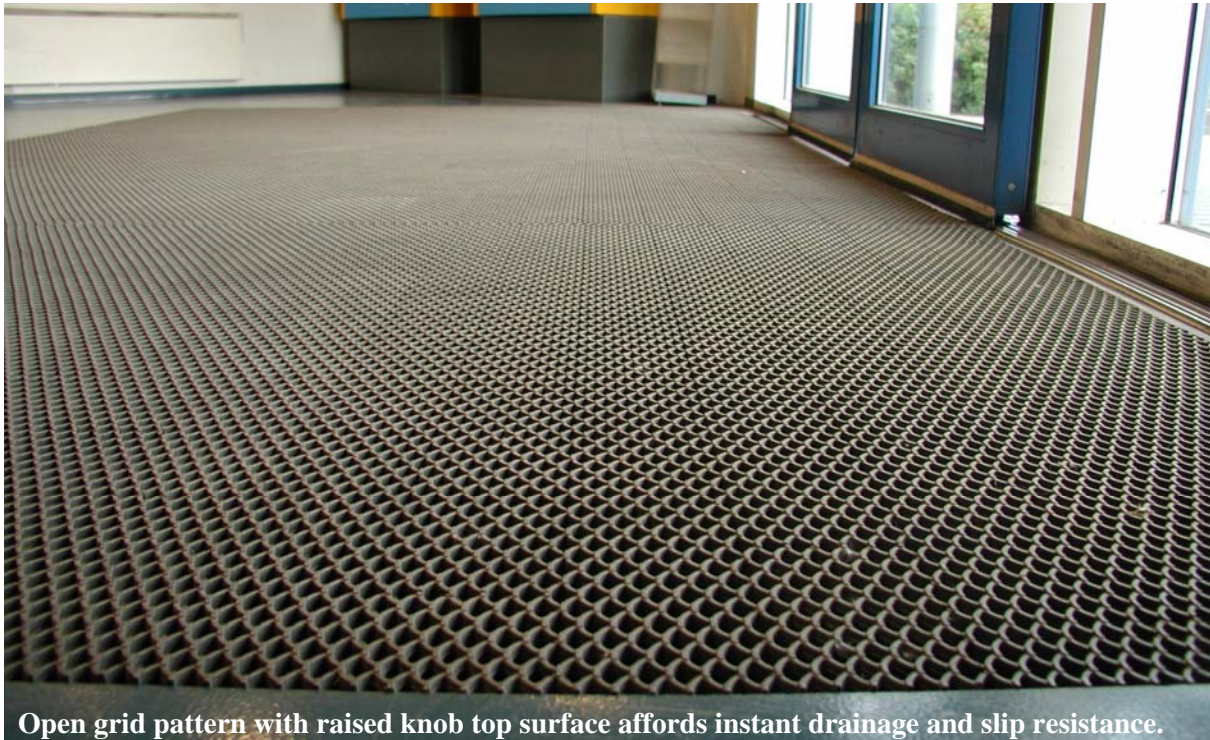
Jaguar is heavy duty primary entrance mat for all high and extreme traffic conditions including airports, subway stations, shopping centres, public buildings etc.

Jaguar is very durable interlocking modular mat for both internal and external applications. It has exceptional performance for heavy foot and trolley traffic.

Jaguar has open construction and slip resistant surface. A functional Jaguar entrance mat stops dirt, sand and debris in the entrance area. Jaguar's surface scrapes away under shoe dirt while letting debris fall through its open grid.



Jaguar - entrance mat



Open grid pattern with raised knob top surface affords instant drainage and slip resistance.

Excellent slip resistance and maximum drainage

Jaguar has slip resistant surface pattern and it offers also an exceptional drainage. Open grid construction allows water to pass through the mat, providing safe and dry surface and reducing slip hazards.

Easy maintenance

Jaguar entrance mat is inexpensive to clean by vacuum cleaning or hosing down. Lightweight Jaguar matting is easy to roll up for maintenance. Dirt that falls through the mat can be simply vacuum cleaned from the floor underneath.

Interlocking tiles

Interlocking modular tiles allow you to create an entrance mat of any length and width. Tiles are very easy to cut to size and shape. Jaguar tiles can be installed in minutes, without the use of special tools.

Accessories:

Jaguar soft edging 12 mm x 40 cm
 Jaguar alu edging 9/12 mm x 300 cm
 Jaguar alu edging 16/20 mm x 300 cm
 Jaguar logo inserts 12, 16 and 20 mm
 Jaguar anchors 12, 16 and 20 mm

SPECIFICATIONS	
Material:	PVC/NBR, UV-shielded. Resists most chemicals and oils. 100 % recyclable.
Tile size:	400 x 100 mm
Packaging:	24 tiles / pkg (= 0,96 m ²)
Height:	12 mm, 16 mm, 20 mm and 25 mm
Weight:	4.9 kg/m ² 7.1 kg/m ² 9.0 kg/m ² 11.3 kg/m ²
Standard colours:	Black, dark grey, light grey, terracotta, blue and green.
Temperature resistance:	-35°C - +70°C
Slip resistance:	DIN 51130: R10
Fire classification:	EN 13501: Cfl - s1
Emissions:	ISO 16000-9: TVOC class A+

Muovihaka

Kuusimäentie 12, 01900 Nurmijärvi, FINLAND

Tel: +358 9 290 22 20

Fax: +358 9 250 48 07

info@muovihaka.com

www.muovihaka.com